

Bull

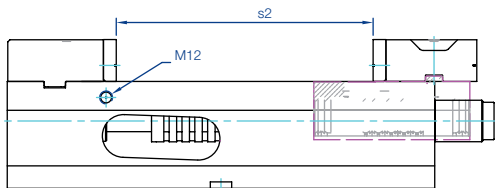
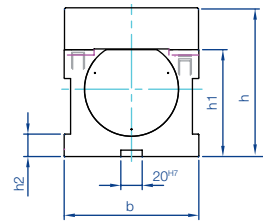
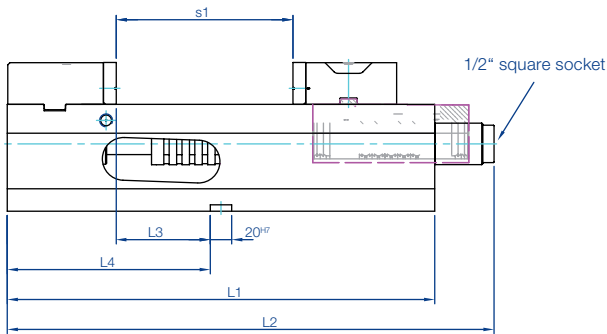
mechanical

Mechanical compact vise with draw-in system and patented clamping range adjustment.

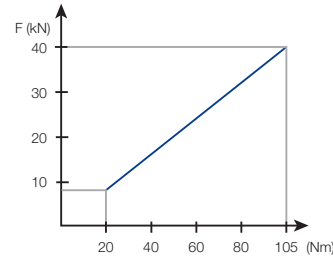
- > Mechanical clamping force build-up
- > Repeatable clamping force through torque wrench
- > Dirt resistant encapsulated spindle, no thread in the chip area
- > Patented quick adjustment of the clamping range
- > Strong body of spheroidal graphite iron GJS-600
- > Compact design, constant length for machining centres
- > Wide clamping range through the use of step jaws

Scope of delivery:

4 clamping claws



Clamping force diagram



| Size b | Order no. | Jaws | max. clamping force kN | max. torque Nm | Clamping range | | Weight kg |
|--------|-----------------|------------|------------------------|----------------|----------------|---------|-----------|
| | | | | | s1 | s2 | |
| 125 | 04.25.152.001.9 | Block jaws | 40 | 105 | 0-165 | 40-240 | 30 |
| 125 | 04.25.152.002.9 | Step jaws | 40 | 105 | 3-175 | 173-345 | 30 |

| Size b | L1 | L2 | L3 | L4 | h | h1 ±0,01 | h2 |
|--------|-----|-----|----|-----|-----|----------|----|
| 125 | 400 | 445 | 88 | 190 | 140 | 100 | 21 |



Step ledge quick release system

- > Step ledges are simply "clicked" in by hand, with no need for tools
- > No penetration of chips beneath the step ledge
- > Secure and stable hold, also with the use of compressed air
- > Available in a range of heights (accessories)



Quick adjustment of the clamping range

- > By rotating the spindle 180° it is possible to adjust the clamping range very quickly

With step jaws

- > Size 125 / 3-345 clamping range
- Order no. 04.25.152.002.9



Bull 5-S

mechanical

Flexible mechanical compact vise for 5-sided machining and for clamping raw parts. Flexibly adjustable to the workpiece through the use of different jaws.

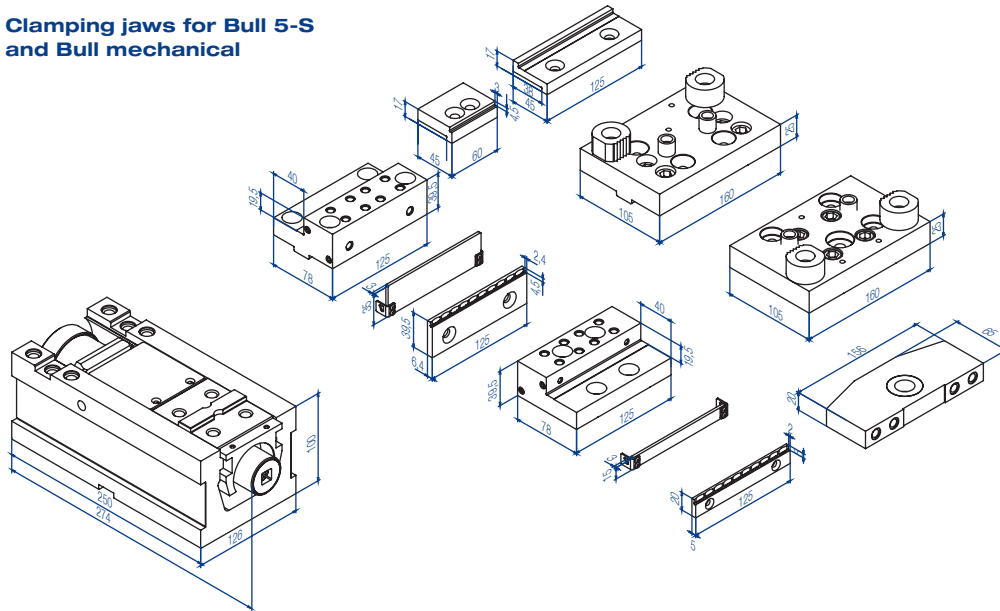
- > Compact design: Optimum accessibility for 5-sided machining
- > Mechanical clamping force build-up
- > Repeatable clamping force through torque wrench
- > Re-tightening stack of disc springs, ideal for clamping with "grip"
- > Dirt resistant covered and encapsulated spindle, no thread in the chip area
- > Patented quick adjustment of the clamping range
- > Strong body of spheroidal graphite iron GJS-600
- > Compact design, constant length for machining centres
- > Wide clamping range through the use of step jaws



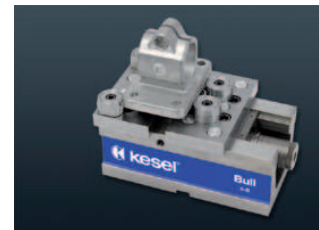
Scope of delivery:

4 clamping claws
without jaws

Clamping jaws for Bull 5-S and Bull mechanical



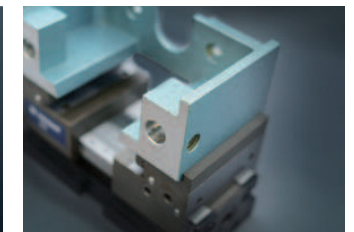
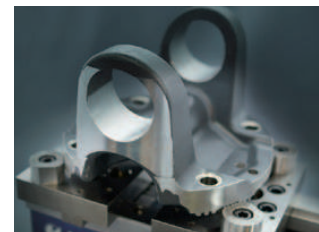
| Size b | Order no. | max. clamping force kN | max. torque Nm | Weight kg |
|--------|-------------------------------|------------------------|----------------|-----------|
| 125 | 04.25.150.002 without jaws | 40 | 105 | 18 |



Through flexible positioning of the grip clamping elements, it is possible to securely clamp uneven, non-parallel workpieces such as saw cuts, cast materials or forged parts.



Through the use of the pendulum jaw, it is possible to adjust to many workpiece contours.



Auxiliary jaws screwed on for optimum machining accessibility and wide clamping ranges.

Accessories for BULL / BULL 5-S



Smooth clamping jaw hardened, ground, standard equipment
Smooth clamping jaw soft (1.2842), milled, for the fabrication of moulding jaws

Clamping jaw with linear grooves for firmly gripping the workpieces

| Size | Order no. Smooth clamping jaw hardened | Height | Thick- ness |
|------|--|--------|----------------|
| 125 | 01.25.152.014.4 | 39,2 | 12 |

| Size | Order no. Smooth clamping jaw soft | Height | Thick- ness |
|------|---------------------------------------|--------|----------------|
| 125 | 01.11.105.002.5 | 39,2 | 12 |

| Size | Order no. Clamping jaw with linear grooves | Height | Thick- ness |
|------|---|--------|----------------|
| 125 | 01.11.105.001.5 | 39,2 | 12 |



Smooth clamping jaw with step, hardened and ground, for saving clamping supports

| Size | Order no. | Step | Thick- ness | Height |
|------|-----------------|-------|----------------|--------|
| 125 | 01.11.105.003.5 | 3 x 6 | 12 | 39,2 |

Clamping jaw with corrugation hardened and ground

| Size | Order no. | Height | Thick- ness | Gripper Order no. | Thread |
|------|-----------------|--------|----------------|----------------------|--------|
| 125 | 01.26.160.035.3 | 40 | 12 | 01.26.160.048.4 | M10 |



Pull-down jaws for raw parts with inset spring plate for clamping raw parts. The spring plates establish a secure hold and deep drawing effect

| Size | Order no. | Height | Thickness |
|------|-----------------|--------|-----------|
| 125 | 04.13.125.250.9 | 40 | 21 |

Step jaws

Hardened steel, for clamping parallel workpieces

| Step jaw | Order no. | Clamping range | |
|----------|---------------|----------------|------------|
| | | Bull 5-S | Bull mech. |
| fixed | 04.25.150.008 | 0-166 | 3-345 |
| mobile | 04.25.150.009 | | |



Step jaws for bolting onto step jaws order no. 01.25.150.008, order no. 01.25.150.009 for expanded clamping range

| Step jaw | Order no. | Width | Addition. clamping range |
|----------|---------------|-------|--------------------------|
| narrow | 04.25.150.054 | 60 | - 8 |
| wide | 04.25.150.053 | 125 | + 62 |



Multi-jaws

| Jaw | Order no. | Width | Clamping range | |
|--------|---------------|-------|----------------|------------|
| | | | Bull 5-S | Bull mech. |
| fixed | 04.25.150.050 | 160 | 10 - 200 | 13 - 365 |
| mobile | 04.25.150.051 | 160 | max. Ø 225 | |



Accessories for BULL / BULL 5-S



Pendulum jaw fits to multi-jaw mobile (order no. 04.25.150.051), for clamping non-parallel workpieces, cast parts and shaped workpieces

Scope of delivery: with 2 x hard metal grip insert

| Order no. |
|---------------|
| 04.25.150.052 |



Torque wrench
20-105 Nm

| Order no. |
|-----------------|
| 70.28.007.202.9 |



Grip ledge fits step jaws order no. 01.25.150.008, order no. 01.25.150.009 for improved hold of the workpieces on the step (4,5 mm deep, 2,5 mm wide)

Scope of delivery: 2 pieces

| Size | Grip ledge | Order no. | Height | Step w x h |
|------|------------|---------------|--------|------------|
| 125 | High | 04.25.150.055 | 39,5 | 1,4 x 4,5 |
| 125 | Step | 04.25.150.056 | 19,5 | 2 x 4,5 |

Step ledges

| For size | Order no. | Height | Thickness |
|----------|-----------------|--------|-----------|
| 125 | 04.25.150.061 | 15 | 3 |
| 125 | 03.26.160.022.9 | 20 | 3 |
| 125 | 03.25.160.024.9 | 35 | 3 |
| 125 | 03.26.160.002.9 | 39 | 3 |



Universal top jaws with angle adjustment possibility hardened and ground

| Size | Order no. | Height | Thickness |
|------|-----------------|--------|-----------|
| 125 | 04.13.125.400.9 | 42 | 10 |



Workpiece stop adjustable

| For size | Order no. | Thread |
|----------|-----------------|--------|
| 125 | 03.11.008.001.4 | M 12 |



Sub-base increasing the vise height results in improved accessibility for 5-sided machining

| Order no. | Width | Height | Length |
|---------------|-------|--------|--------|
| 03.26.150.002 | 125 | 100 | 250 |

