

# Bull

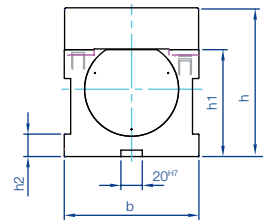
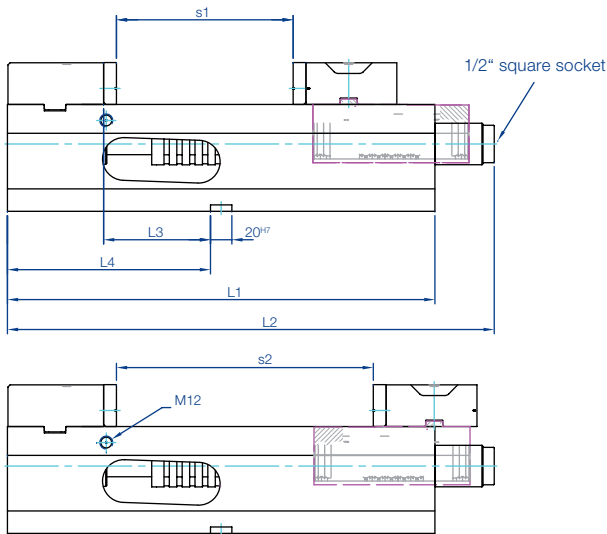
## mechanical

Mechanical compact vice with draw-in system and patented clamping range adjustment.

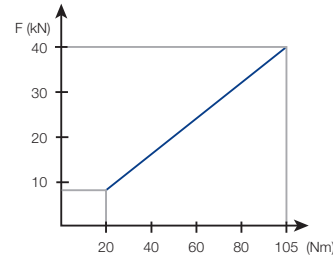
- > Mechanical clamping force build-up
- > Repeatable clamping force through torque wrench
- > Dirt resistant encapsulated spindle, no thread in the chip area
- > Patented quick adjustment of the clamping range
- > Strong body of spheroidal graphite iron GJS-600
- > Compact design, constant length for machining centres
- > Wide clamping range through the use of step jaws

### Scope of delivery:

4 clamping claws



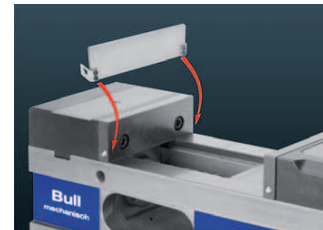
### Clamping force diagram



Size b	Order no.	Jaws	max. clamping force kN	max. torque Nm	Clamping range		Weight kg
					s1	s2	
125	04.25.152.001.9	Block jaws	40	105	0-165	40-240	30
125	04.25.152.002.9	Step jaws	40	105	3-175	173-345	30

Size b	L1	L2	L3	L4	h	h1 ±0,01	h2
125	400	456	88	190	140	100	21



### Step ledge quick release system

- > Step ledges are simply "clicked" in by hand, with no need for tools
- > No penetration of chips beneath the step ledge
- > Secure and stable hold, also with the use of compressed air
- > Available in a range of heights (accessories)



### Quick adjustment of the clamping range

- > By rotating the spindle through 180° it is possible to adjust the clamping range very quickly

### With step jaws

- > Size 125 / 3-345 clamping range
- Order no. 04.25.152.002.9

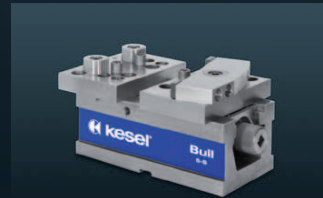


# Bull 5-S

## mechanical

Flexible mechanical compact vice for 5-sided machining and for clamping raw parts. Flexibly adjustable to the workpiece through the use of different jaws.

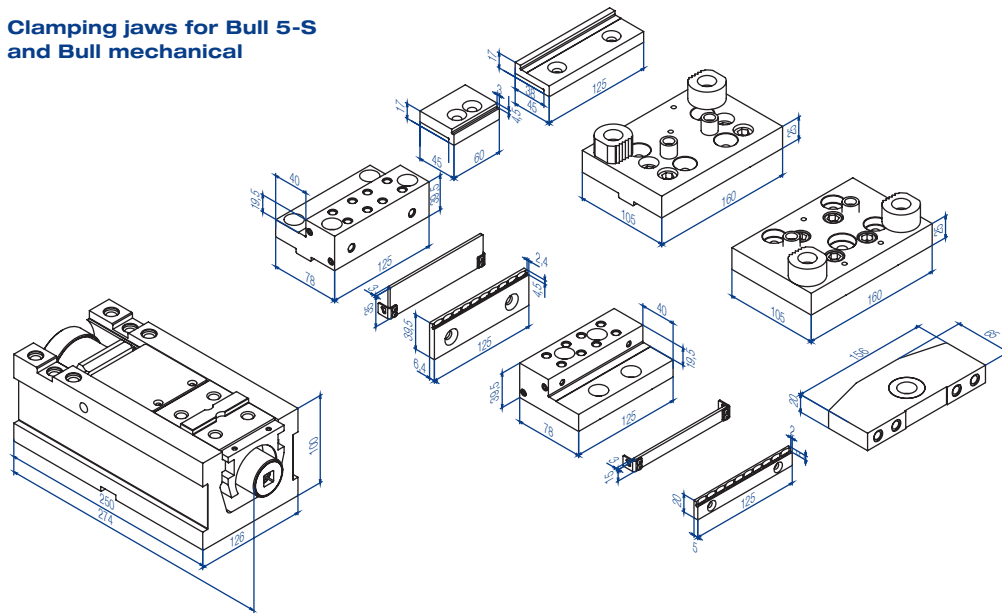
- > Compact design: Optimum accessibility for 5-sided machining
- > Mechanical clamping force build-up
- > Repeatable clamping force through torque wrench
- > Re-tightening stack of disc springs, ideal for clamping with "grip"
- > Dirt resistant covered and encapsulated spindle, no thread in the chip area
- > Patented quick adjustment of the clamping range
- > Strong body of spheroidal graphite iron GJS-600
- > Compact design, constant length for machining centres
- > Wide clamping range through the use of step jaws



### Scope of delivery:

4 clamping claws

### Clamping jaws for Bull 5-S and Bull mechanical



Size b	Order no.	max. clamping force kN	max. torque Nm	Weight kg
125	04.25.150.002 without jaws	40	105	18



Through flexible positioning of the grip clamping elements, it is possible to securely clamp uneven, non-parallel workpieces such as saw cuts, cast materials or forged parts.



Through the use of the pendulum jaw, it is possible to adjust to many workpiece contours.



Auxiliary jaws screwed on for optimum machining accessibility and wide clamping ranges.



Extension to max. clamping range 180 mm. The extension is fitted on the face of the Bull 5-S.

Order no.	Width	Length	Height
03.26.150.001	125 mm	180 mm	100 mm

**Accessories for BULL / BULL 5-S**



**Smooth clamping jaw hardened**, grinded, standard equipment  
**Smooth clamping jaw soft (1.2842)**, milled, for the fabrication of moulding jaws

**Clamping jaw with linear grooves** for firmly gripping the workpieces

Size	Order no. Smooth clamping jaw hardened	Height	Thick- ness
125	01.25.152.014.4	39,2	12

Size	Order no. Smooth clamping jaw soft	Height	Thick- ness
125	01.11.105.002.5	39,2	12

Size	Order no. Clamping jaw with linear grooves	Height	Thick- ness
125	01.11.105.001.5	39,2	12



**Smooth clamping jaw** with step, hardened and grinded, for saving clamping supports

Size	Order no.	Step	Thick- ness	Height
125	01.11.105.003.5	3 x 6	12	39,2



**Clamping jaw with corrugation** hardened and grinded

Size	Order no.	Height	Thick- ness	Gripper Order no.	Thread
125	01.26.160.035.3	40	12	01.26.160.048.4	M10



**Pull-down jaws for raw parts** with inset spring leaf for clamping raw parts. The spring leaves establish a secure hold and deep drawing effect

Size	Order no.	Height	Thickness
125	04.13.125.250.9	40	21

**Step jaws**

Hardened steel, for clamping parallel workpieces



Step jaw	Order no.	Clamping range	
		Bull 5-S	Bull mech.
fixed	04.25.150.008	0-166	3-345
mobile	04.25.150.009		

**Step jaws** for bolting onto step jaws order no. 01.25.150.008, order no. 01.25.150.009 for expanded clamping range



Step jaw	Order no.	Width	Addition. clamping range
narrow	04.25.150.054	60	- 8
wide	04.25.150.053	125	+ 62

**Multi-jaws**



Step jaw	Order no.	Width	Clamping range	
			Bull 5-S	Bull mech.
fixed	04.25.150.050	160	10 - 190	13 - 365
mobile	04.25.150.051	160		

**Accessories for BULL / BULL 5-S**



**Pendulum jaw** fits multi-jaw moving, order no. 04.25.150.051 for clamping non-parallel workpieces, cast parts and shaped workpieces

Scope of delivery: with 2 x hard metal grip insert

Order no.
04.25.150.052



**Torque wrench**  
20-105 Nm

Order no.
70.28.007.202.9



**Grip ledge** fits step jaws order no. 01.25.150.008, order no. 01.25.150.009 for improved hold of the workpieces on the step (4,5 mm deep, 2,5 mm wide)

Scope of delivery: 2 units per order no.

Size	Grip ledge	Order no.	Height	Step w x h
125	High	04.25.150.055	39,5	1,4 x 4,5
125	Step	04.25.150.056	19,5	2 x 4,5

**Step ledges**



For size	Order no.	Height	Thickness
125	04.25.150.061	15	3
125	03.26.160.022.9	20	3
125	03.25.160.024.9	35	3
125	03.26.160.002.9	39	3

**Universal top jaws with angle adjustment possibility** hardened and grinded



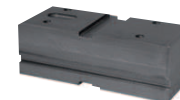
Size	Order no.	Height	Thickness
125	04.13.125.400.9	42	10

**Workpiece stop adjustable**



For size	Order no.	Thread
125	03.11.008.001.4	M 12

**Subbase** increasing the vice height results in improved accessibility for 5-sided machining



Order no.	Width	Height	Length
03.26.150.002	126	100	250