

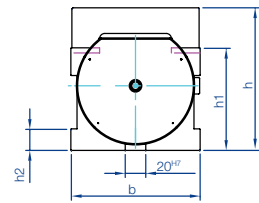
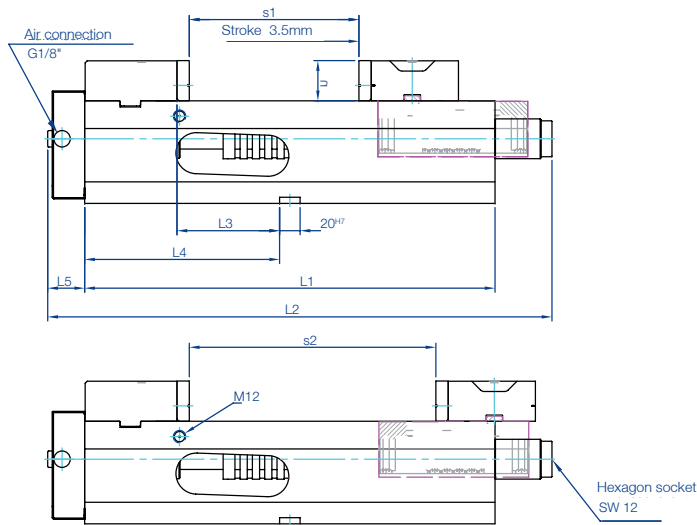
Bull pneumatic

Pneumatic high pressure vice with draw-in system and patented clamping range adjustment for serial parts. Effortless clamping.

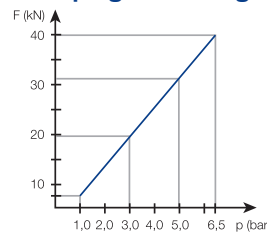
- > Automated pneumatic build-up of clamping force
- > With clamping force intensifier: max. 6.5 bar air pressure necessary
- > Dirt resistant encapsulated spindle, no thread in the chip area
- > Patented quick adjustment of the clamping range
- > Strong body of spheroidal graphite iron GJS-600
- > Compact design, constant length for machining centres
- > Large clamping range through use of step jaws
- > Step ledges for "clicking in"

Scope of delivery:

4 clamping claws, 1 operating key

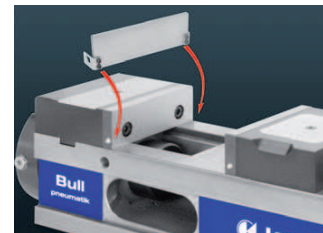


Clamping force diagram



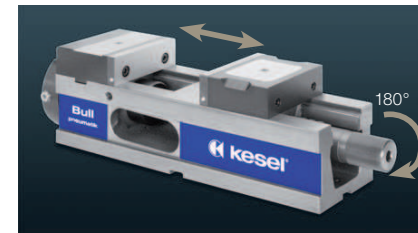
Size b	Order no.	Jaws	max. clamping force kN	max. compressed air bar	Clamping range		Weight kg
					s1	s2	
125	04.25.153.001.9	Block jaws	40	6,5	0-165	80-240	35
125	04.25.153.0003	Step jaws	40	6,5	3-270	100-345	35

Size b	L1	L2	L3	L4	L5	h	h1 ±0,01	h2
125	400	494	88	190	36	140	100	21



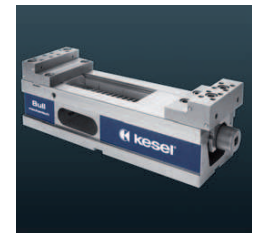
Step ledge quick release system

- > Step ledges are simply "clicked" in by hand, with no need for tools
- > No penetration of chips beneath the step ledge
- > Secure and stable hold, also with the use of compressed air
- > Available in a range of heights (accessories)



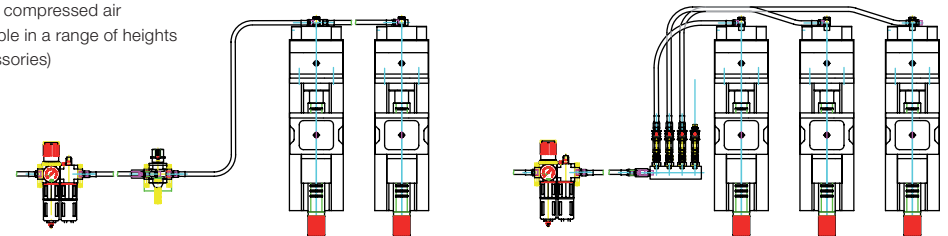
Quick adjustment of the clamping range

- > By rotating the spindle through 180° it is possible to adjust the clamping range very quickly



With step jaws

- > Clamping range 3-345 mm



Example applications:
2 x Bull pneumatic clamping together

3 x Bull pneumatic clamping individually

BULL Pneumatic accessories



Maintenance unit for oiling the compressed air and reducing or adjusting the clamping force

Order no.	Thread
01.25.153.110.9	G 1/8"



Quick release coupling Coupling connector and coupling socket for quick set-up

Order no.	Thread
01.25.153.115.9	G 1/8"



Foot valve

Order no.	Thread
33.21.032.007.9	G 1/4"



L-threaded connection with internal thread, aluminium blue anodised, pivoting, incl. 2 PVC sealing rings

Order no.	Thread
01.25.153.111.9	G 1/8"



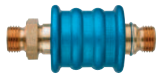
Magnet valve

Order no.	Thread
33.40.428.029.9	G 1/4"



T-threaded connection with internal thread, aluminium blue anodised, pivoting, incl. 2 PVC sealing rings

Order no.	Thread
01.25.153.112.9	G 1/8"



Manual slide valve
Manual sliding 3/2 way valve

Order no.	Thread
01.25.153.113.9	G 1/8"



Double threaded nipple and sleeve

Order no.	Thread
01.25.153.116.9	G 1/8"



heck valve

Order no.	Thread
33.11.032.012.9	G 1/8"



Reduction nipple Threaded connection, internal G 1/8" external G 1/4"

Order no.
33.40.428.003.9



Check valve lockable

Order no.	Thread
33.21.032.009.9	G 1/8"



High pressure hose with NW 4 mm, with brass connection both sides, G 1/8", metallic gauze sheath for protection against hot chips in the working area

Order no.	Diameter
01.25.153.101.9	0,3 m
01.25.153.102.9	0,5 m
01.25.153.103.9	1,0 m
01.25.153.104.9	2,0 m



Rotary knob on-off valve with threaded connection plate. Design as 3/2 way valve, manually actuated

Order no.
01.25.153.114.9



Quick exhaust valve

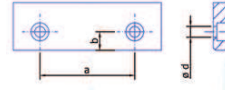
Order no.	Thread
33.11.032.007.9	G 1/8"



Distributor strip Threaded connection, internal G 1/4" external G 1/8"

Order no.
33.30.015.003.9

BULL Pneumatic accessories



Dimensional drawing of the fastening holes of all facing jaws

Size	a	b	ø d
125	80	15	9,0



Smooth clamping jaw hardened, grinded, standard equipment
Smooth clamping jaw soft (1.2842), milled, for the fabrication of moulding jaws



Clamping jaw with linear grooves for firmly gripping the workpieces

Size	Order no. Smooth clamping jaw hardened	Height	Thick- ness
125	01.25.152.014.4	39,2	12



Size	Order no. Smooth clamping jaw soft	Height	Thick- ness
125	01.11.105.002.5	39,2	12

Size	Order no. Clamping jaw with linear grooves	Height	Thick- ness
125	01.11.105.001.5	39,2	12



Smooth clamping jaw with step, hardened and grinded, for saving clamping supports

Size	Order no.	Step	Thick- ness	Height
125	01.11.105.003.5	3 x 6	12	39,2
125	01.11.105.008.5	5 x 10	12	39,2



Clamping jaw with corrugation hardened and grinded

Size	Order no.	Height	Thick- ness	Gripper Order no.	Thread
125	01.26.160.035.3	40	12	01.26.160.048.4	M10

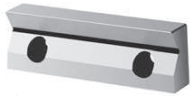


Step jaws

Hardened steel, for clamping parallel workpieces

Step jaw	Order no.	Clamping range
fixed	01.26.152.007.3	25-345
mobile	01.25.150.009	

BULL Pneumatic accessories



Prism jaws with horizontal prism 120°
hardened and grinded

Size I	Order no.	Height	Thick-ness	Clamping diameter	
				with 1 jaw	with 2 jaw
125	01.11.105.005.4	39,2	20	ø 9-50	ø 14-50



Prism jaws with horizontal and vertical prism 90° hardened and grinded

Size I	Order no.	Height	Thick-ness	Clamping diameter	
				with 1 jaw	with 2 jaw
125	01.11.105.004.4	39,2	28	ø 15-42	ø 24-42



Pendulum jaws with smooth slide, hardened and grinded, for clamping conical workpieces

Size	Order no.	Height	Thickness
125	04.13.125.150.9	39,2	43



Pull-down jaws with inset spring leaf for clamping raw parts. The spring leaves establish a secure hold and deep drawing effect

Size	Order no.	Height	Thickness
125	04.13.125.200.9	39,2	25



Pull-down jaws for raw parts with inset spring leaf for clamping raw parts. The spring leaves establish a secure hold and deep drawing effect

Size	Order no.	Height	Thickness
125	04.13.125.250.9	40	21

BULL Pneumatic accessories



Universal top jaws with angle adjustment possibility hardened and grinded

Size	Order no.	Height	Thickness
125	04.13.125.400.9	42	10



Workpiece stop adjustable

For size	Order no.	Thread
125	03.11.008.001.4	M 12



Grip ledge fits step jaws order no. 01.25.150.008, order no. 01.25.150.009 for improved hold of the workpieces on the step (4.5 mm deep, 2.5 mm wide)

Scope of delivery: 2 units per order no.

Size	Grip ledge	Order no.	Height	Step w x h
125	High	04.25.150.055	39,5	1,4 x 4,5
125	Step	04.25.150.056	19,5	2 x 4,5



Step ledges

For size	Order no.	Height	Thickness
125	04.25.150.061	15	3
125	03.26.160.022.9	20	3
125	03.25.160.024.9	35	3
125	03.26.160.002.9	39	3



Manual crank in shortened design for use in place of the standard manual crank, if the throughput height to the machine table is too small

Size	Order no.	Length	Width
125-160	03.15.103.001.4	110	90