

Syncroline

Single and centring vice, also for 5-sided machining.
Versatile application on all machines.

- > Strong body of spheroidal graphite iron GJS-600
- > Patented quick change jaws
- > Step ledges for "clicking in"
- > Screw-on "grip" ledges
- > Optimum chip protection of the spindle through patented scraping technology
- > Alignment possible through longitudinal and lateral grooves, as well as infeed systems

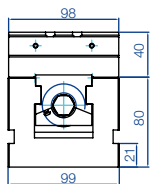
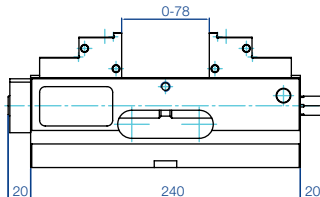
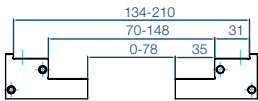
Scope of delivery:

4 clamping claws, 1 operating key



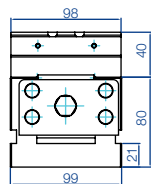
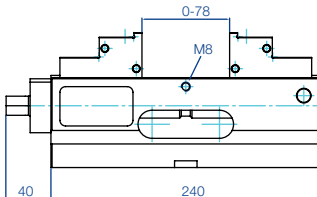
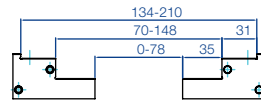
1 Centring

Order no.	04.25.270.001.1		
at	20 Nm	60 Nm	max.115 Nm
Clamping force:	5 kN	15 kN	max. 30 kN



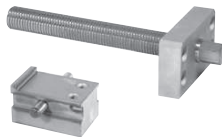
2 Single

Order no.	04.25.271.001.1		
at	20 Nm	40 Nm	max.80 Nm
Clamping force:	9 kN	17 kN	max. 35 kN



Conversion kits

For conversion from single to centring vice
Order no.: 03.25.270.001.2

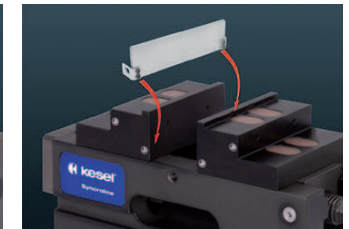


For conversion from centring to single vice
Order no.: 03.25.271.001.



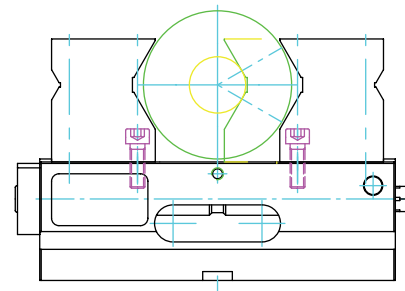
Jaws quick release system

- > Quick rotation or change of the serial top jaws (it is only necessary to turn and open 2 fastening screws)
- > Quick replacement of custom jaws produced in-house



Step ledge quick release system

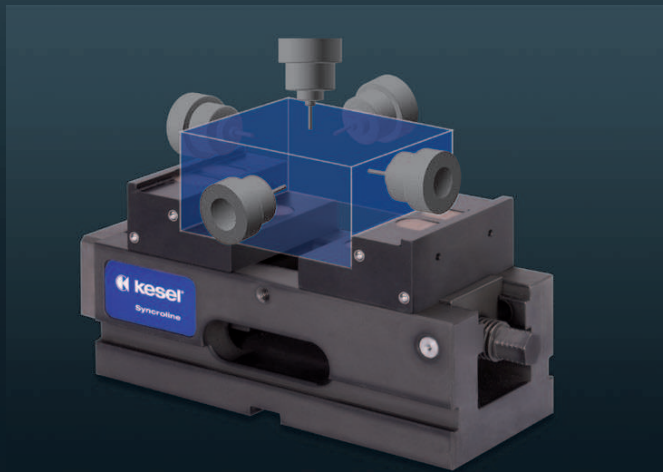
- > Step ledges are simply "clicked" in by hand, with no need for tools
- > No penetration of chips beneath the step ledge
- > Secure and stable hold, also with the use of compressed air
- > Available in a range of heights (accessories)



With prism jaw (optional)

> Clamping range $\sigma 17$ - $\sigma 100$ mm

5-axis machining



SYNCROLINE accessories



Step ledges

For size	Order no.	Height
100	03.25.270.001.9	15
100	03.25.270.002.9	35



Torque wrench

For size	Order no.	Setting range Nm
100	70.26.007.202.9	20-100



Grip ledges

For size	Order no.	Clamping depth
100 - hohe Seite	01.25.270.070.3	2
100 - Stufen Seite	01.25.270.071.3	2
100 - oben	01.25.270.072.3	2



Subbase

For size	Order no.	kg	Height	Length
100	01.25.270.020.3	14	80	240



Operating key

Size	Order no.
100	03.25.270.004.9



Prism jaw

For size	Order no.	Diameter	Height	Length
100	01.26.270.003.3	ø 17-100	83	70